

## EXD BEACON

The EXD Beacon range has been approved for use in potentially explosive atmospheres and very harsh environmental conditions.

These beacons have a choice of two types of light source: either Xenon (strobe) with multiple flash rate and power ratings or an LED array with three status type indication options and two power ratings. The design allows for termination inside the enclosure.

The units also have the ability to be fitted with a telephone initiation function and can be used as the second ring output indicator for telephones when installed in very noisy environments.

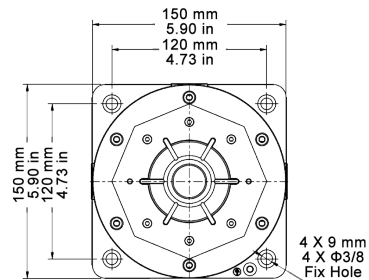
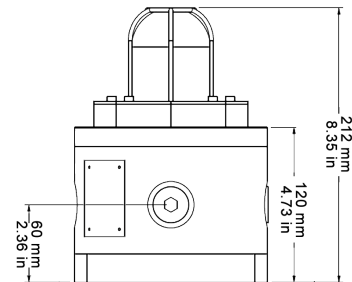
### Features

- Approved by ATEX and CQST • IMETRO and IECEx (Pending)
- ATEX: II 2G Exd IIC T4 - T6 (Incorporating IIA & IIB)
- Zones 1&2, Zones 21&22 (Pending)
- Conforms to EN (IEC) 60079-0 EN (IEC) 60079-1 and EN54
- 360 degree light output around the vertical axis
- Dustproof & Weatherproof

### Applications

Oil and Gas, On-shore and Offshore, Chemical, Petrochemical, Refineries & Marine locations etc.

### Approvals & Conformities



### Specifications

Part No.	Voltage (50/60Hz)	Beacon Type	Body Colour	Lens Colour
TCB-0001	12-48 VDC	5J Xenon	Red	Amber Lens
TCB-0002	100-240 VAC	5J Xenon	Red	Amber Lens
TCB-0003	12-48 VDC	5J Xenon	Red	Red Lens
TCB-0004	100-240 VAC	5J Xenon	Red	Red Lens
TCB-0005	12-48 VDC	10J Xenon	Red	Amber Lens
TCB-0006	100-240 VAC	10J Xenon	Red	Amber Lens
TCB-0007	12-48 VDC	10J Xenon	Red	Red Lens
TCB-0008	100-240 VAC	10J Xenon	Red	Red Lens
TCB-0009	12-48 VDC	20J Xenon	Red	Amber Lens
TCB-0010	100-240 VAC	20J Xenon	Red	Amber Lens
TCB-0011	12-48 VDC	20J Xenon	Red	Red Lens
TCB-0012	100-240 VAC	20J Xenon	Red	Red Lens
TCB-0013	12-48 VDC	5W LED	Red	Amber Lens
TCB-0014	100-240 VAC	10W LED	Red	Amber Lens
TCB-0015	12-48 VDC	5W LED	Red	Red Lens
TCB-0016	100-240 VAC	10W LED	Red	Red Lens

IP Rating: IP66/67 Operating Temp: -40°C to +70°C

Construction: Glass Reinforced Plastic

Cable Entries: 4 x M20, M25, 1/2"NPT, 3/4"NPT Weight: 3.8kg